

---

---

# FRAMES OF MISINFORMATION, EXTREMISM, & CONSPIRACISM

## Web Forums and Social-Media Discussions

### Monthly Summary

### January 2023

---

---

Richard Lee Rogers

Youngstown State University  
Dept. of Criminal Justice & Consumer Sciences

Web Site: <https://www.rogersperspectives.com>

Email: [rlrogers02@ysu.edu](mailto:rlrogers02@ysu.edu)

March 30, 2023

All material © 2023 Youngstown State University

*This report contains top-line monthly numbers from a purposive sample of forums and discussions collected from 16 platforms that are known for hosting misinformation, extremism, and conspiracism (MEC sector).*

*This project receives funding from the Ohio Supercomputer Center through a faculty grant.*

# Activity Summary

---

---

**Methodological Notes:** Activity levels are defined as the % of posts with at least one key word, phrase, or stem identified with particular themes. Because the study of language and ideology is a key aspect of the larger project, results are limited exclusively to posts with at least 50 words. The complete list of current platforms from which forums were selected can be found toward the end of this document. A user's manual and program code can be found at <https://www.rogersperspectives.com>. Any corrections for errors will appear in next month's report.

---

---

The Reddit data has been restored and the December 2022 numbers corrected.

---

---

## Key Trends

- For January 2023, slight increases were present across a diverse set of forums and frames, but exceptionally heightened activity in a single platform cross-classified as a Political Right and Patriot / Military forum resulted in an increase of at least 40% in each (Fig. 4).
- Activity in the Health frame increased 30% (Fig. 14).

## General Trends

- Among posts with at least 50 words in the purposive sample, January activity across all MEC sector forums averaged 11,365 posts per day, up 10% from the December 2022 and 7% over the first month from the previous quarter (Fig. 1-4). Activity was 31% below the peak month of August 2022.

## Violent/Aggressive and Toxic Discourse

- The volume of Violent/Aggressive discourse increased 11% in January, a rate slightly higher than the MEC sector as a whole. Nonetheless, Violent/Aggressive discourse continued to be present in less than 27% of discourse, that is, near its all-time low (Fig. 6 and 7).
- Health Misinformation forums continued to contain the most Violent/Aggressive discourse (Fig. 7).

## Religion

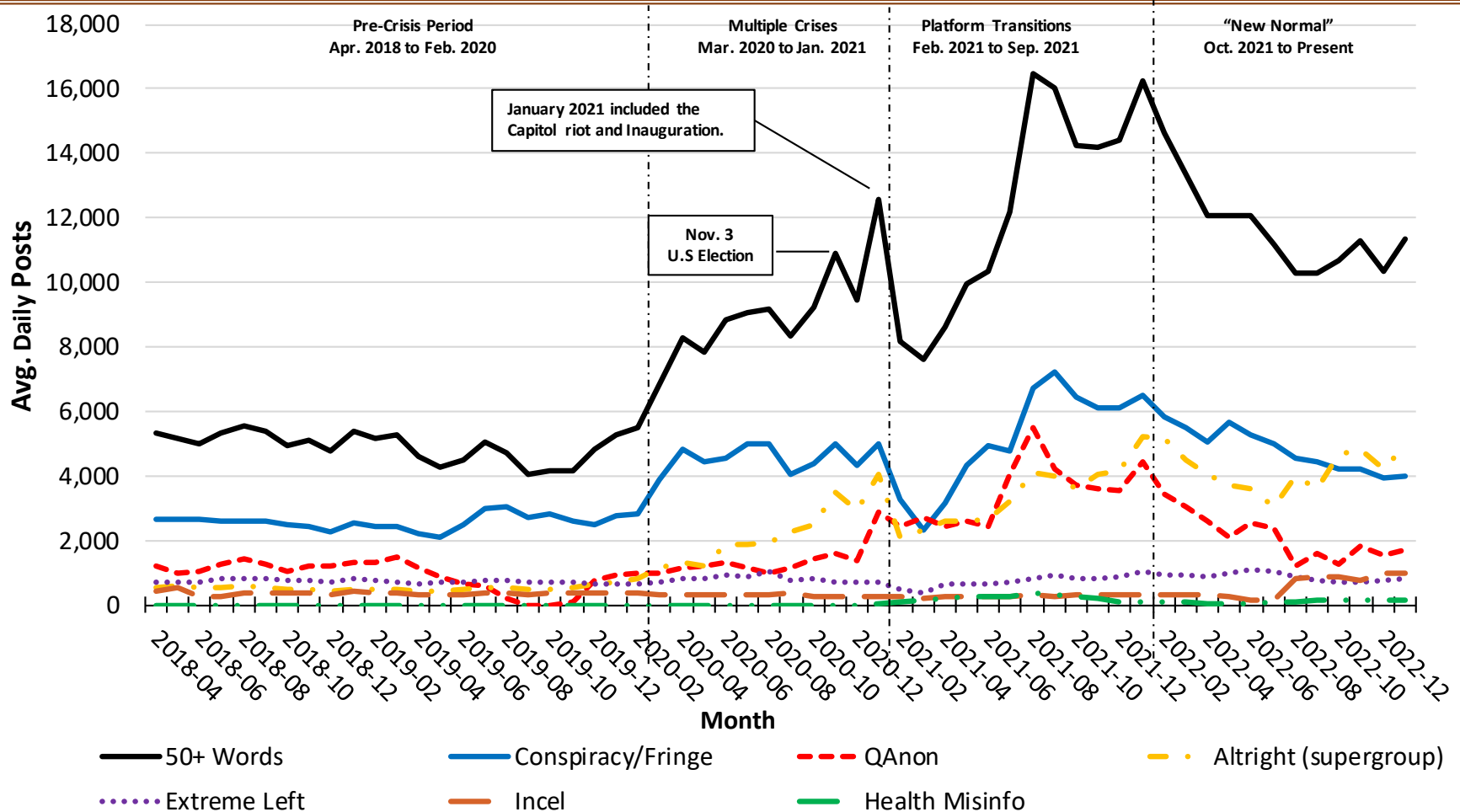
- The Religion composite increased 3% in January. However, this growth rate was below the MEC sector overall, so the Religion composite fell from 28% of all MEC activity to 26% (Fig. 8)
- Christian Radical Right fell 1% in its activity level and from 14% to 13% of all MEC activity (Fig. 8).

## Public Safety and Public Health

- References to sex crimes fell 12% in January 2023 (Fig. 12).
- A component of the increase in the Health frame was a 60% growth in the discussion of vaccinations (Fig 15.).

# Figure 1

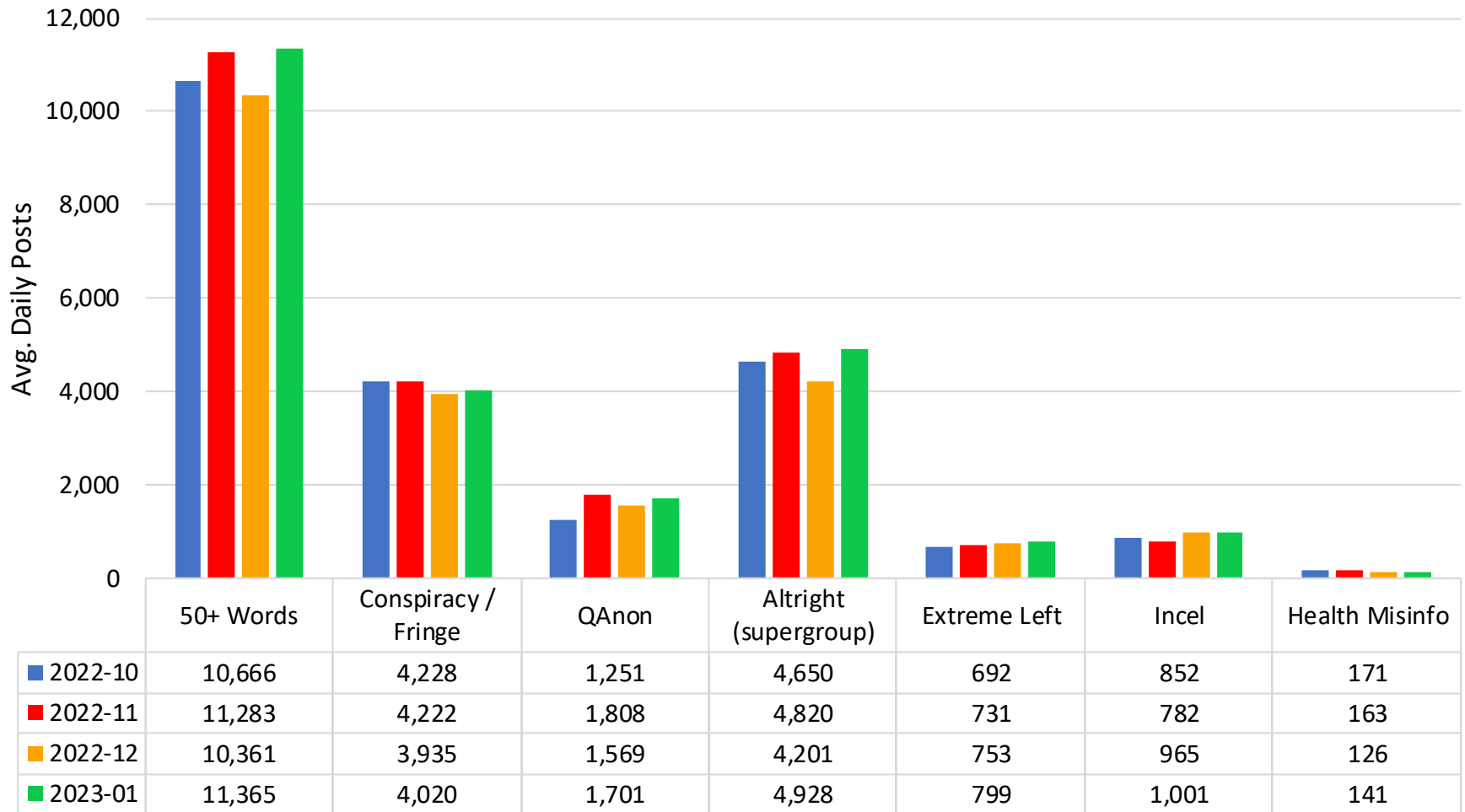
## Avg. Daily Activity by Month



Note: 15,304,197 recovered posts with at least 50 words. Forums are not mutually exclusive. QAnon forums could be classified as both Conspiracy/Fringe and Extreme Right, but QAnon forums are separated due to their size and influence. This report uses a broad definition of the Alt-Right supergroup, which include both Extreme-Right groups (e.g., neo-Nazis, Boys, secessionists) and right-leaning groups with which Extreme-Right groups appear to be forming ideological alliances (Rogers, 2021). The breakout of the Alt-Right can be found in Figure 3.

Periods: The period of multiple crises refers to the influence of the COVID-19 pandemic, BLM protests, and 2020 presidential election activity. Platform Transition highlights the rise of new extremist and conspiracists forums in the universe of platforms, many due to their expulsion from Facebook and Twitter and the collapse of Parler.

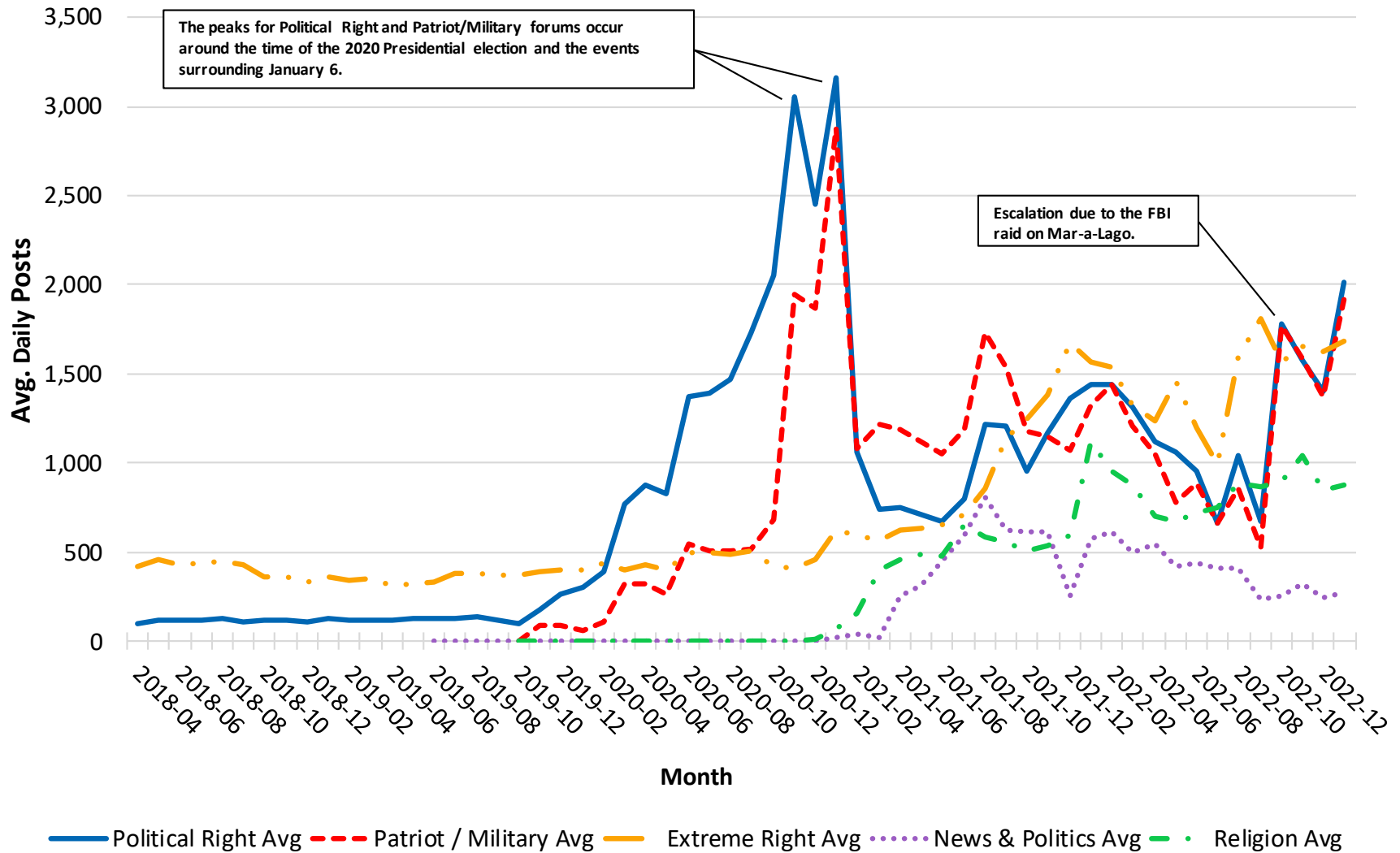
## Figure 2 Avg. Daily Activity for Past Four Months



Note: 1,342,645 recovered posts with at least 50 words. Forums are not mutually exclusive. QAnon forums could be classified as both Conspiracy/Fringe and Extreme Right, but QAnon forums are separated due to their size and influence. This report uses a broad definition of the Alt-Right Supergroup, which include both Extreme-Right groups (e.g., neo-Nazis, Boys, secessionists) and right-leaning groups with which Extreme-Right groups appear to be forming ideological alliances (Rogers, 2021). The breakout of the Alt-Right can be found in Figure 4.

# Figure 3

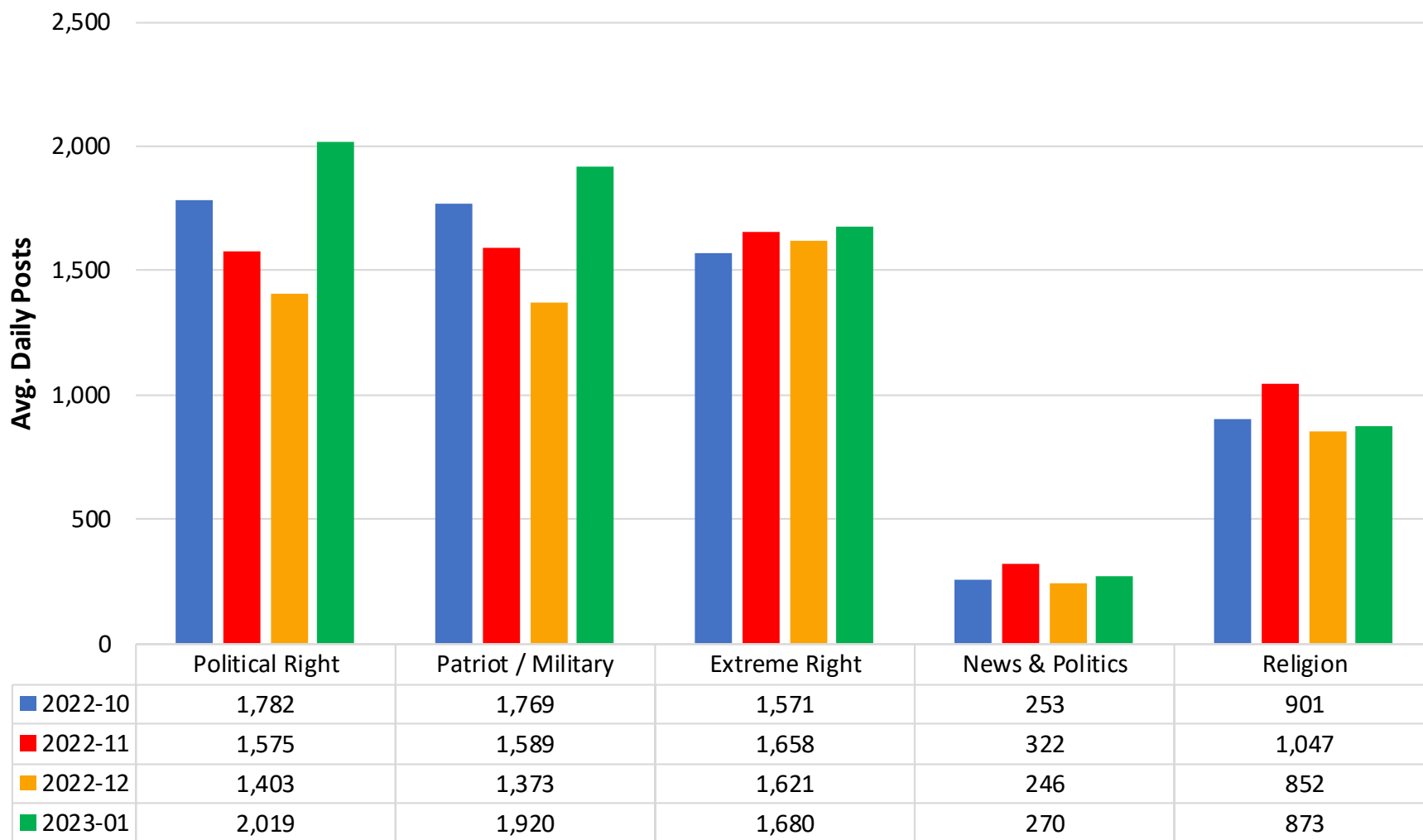
## Avg. Daily Activity by Month for Alt-Right Supergroup by Month



Notes: 571,721 recovered posts. These groups are a subset of forums classified as Alt-Right in Figure 1. The category Extreme Right includes but is not limited to neo-Nazis, Proud Boys, secessionists, and sovereign citizens. The Political Right includes partisan groups related to MAGA and libertarianism. While this study does not examine mainstream political sites, the discourse of partisan forums selected for the purposive sample often strays beyond normal partisan discourse.

# Figure 4

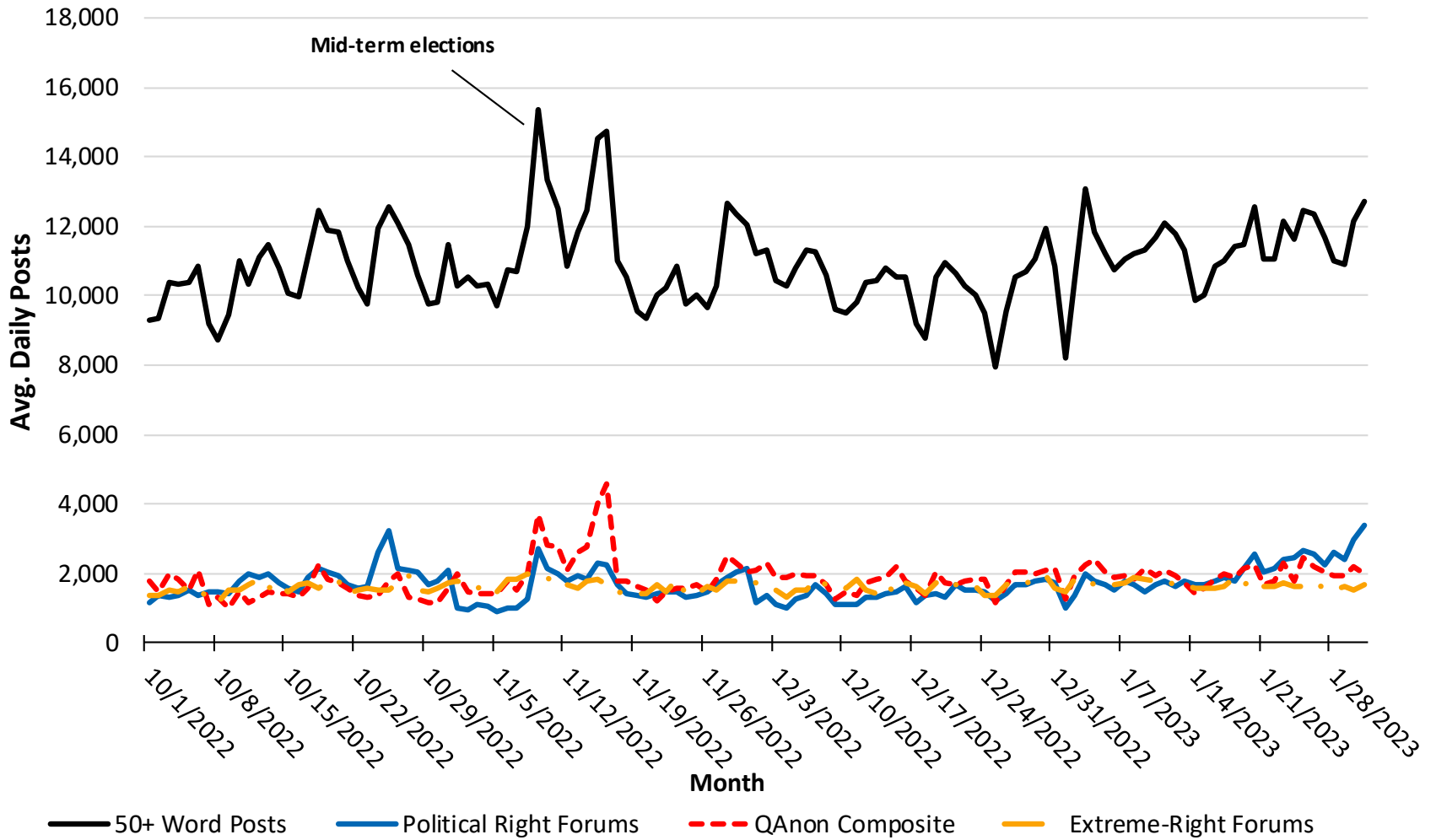
## Avg. Daily Activity for Alt-Right Forums for Past Four Months



Note: 477,162 recovered posts. These groups are a subset of forums classified as Alt-Right in Figure 2. The category Extreme Right includes but is not limited to neo-Nazis, Proud Boys, and sovereign citizens. The Political Right includes partisan groups related to MAGA and libertarianism. While this study does not examine mainstream political sites, the discourse of partisan forums selected for the purposive sample often strays beyond normal partisan discourse.

# Figure 5

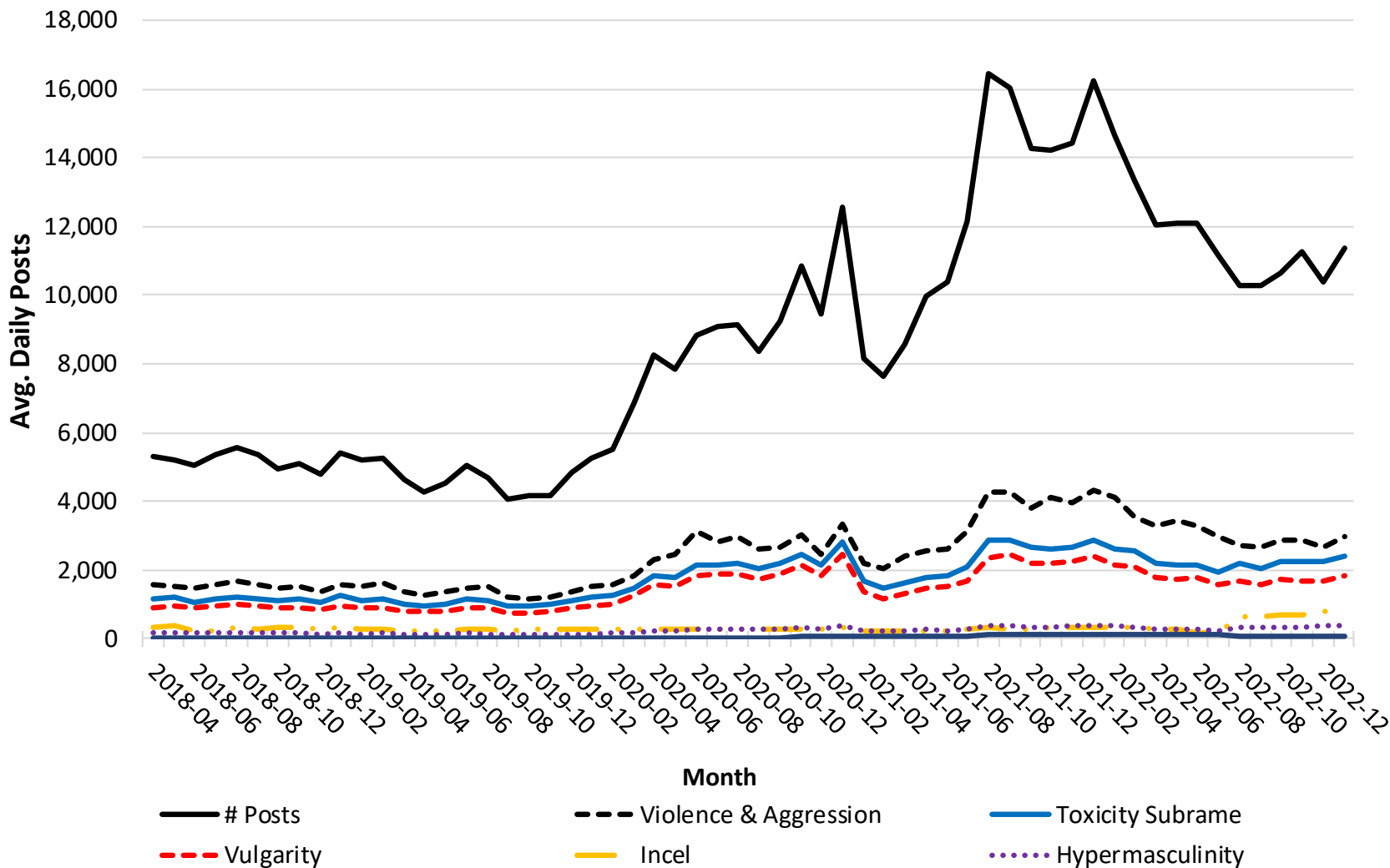
## Daily Posts for Most Recent 4 Months



Note: 1,342,645 recovered posts. Forums and composites are not exhaustive and not mutually exclusive .

# Figure 6

## Avg. Daily Posts for Violent / Aggressive and Toxic Discourse by Month

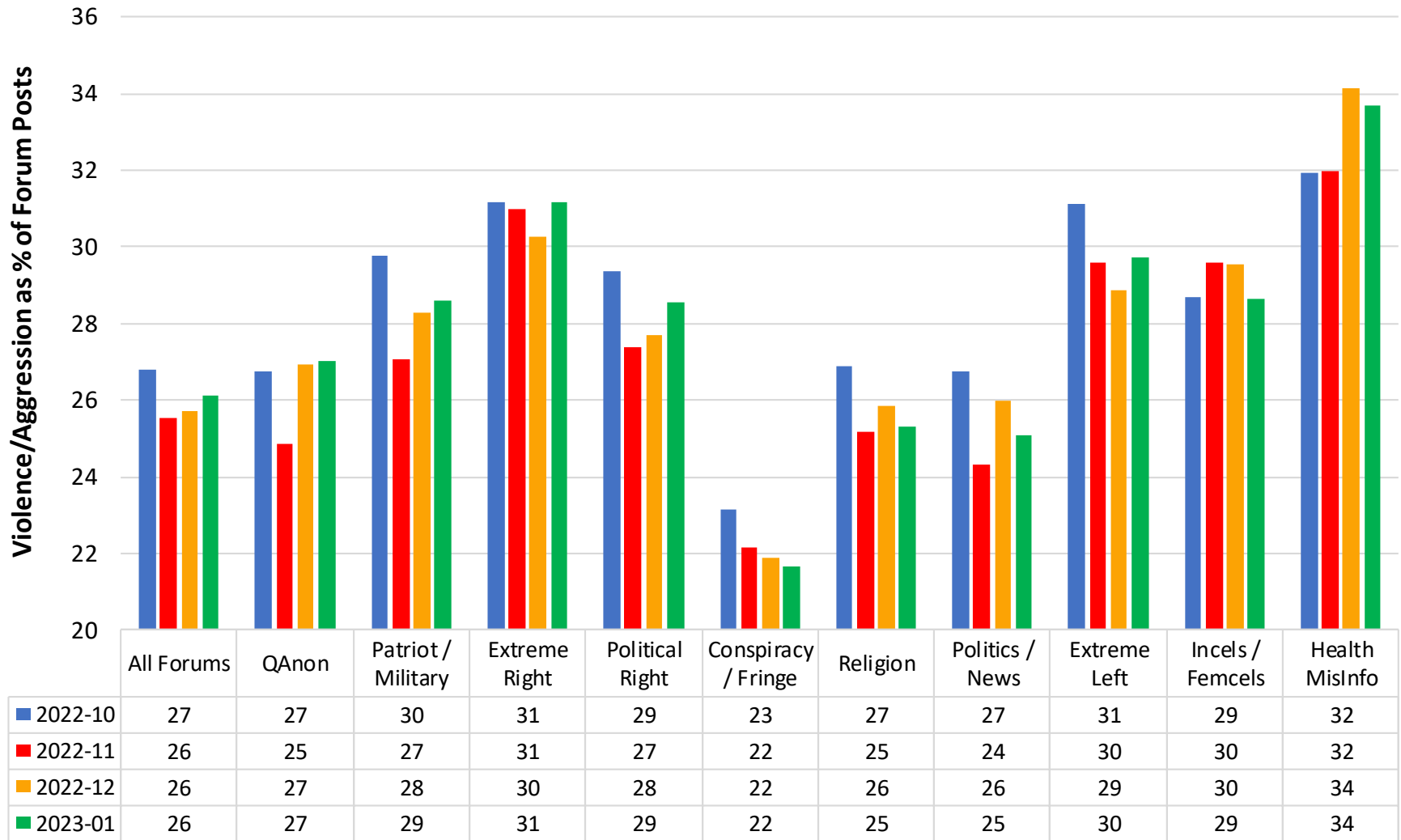


Note: The Violence / Aggression subframe had 4,262,757 recovered posts. The Toxicity subframe had 3,128,987 recovered posts. The subframes are not mutually exclusive. Violent /Aggressive discourse is a standalone subframe in the Values frame and excludes references identified with the Military frame. Toxic discourse, also a subframe in the Values frame, includes the use of vulgar language, incel discourse, hypermasculinity, and accelerationism. Accelerationism does not include prophetic discourse (Fig.9).



# Figure 7

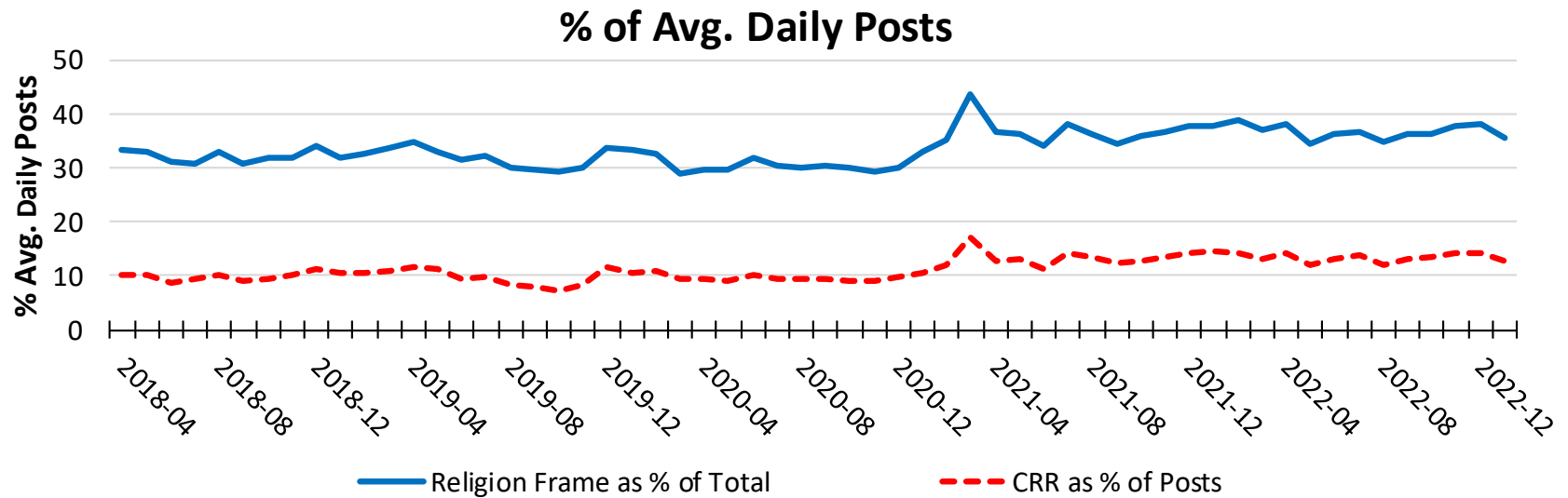
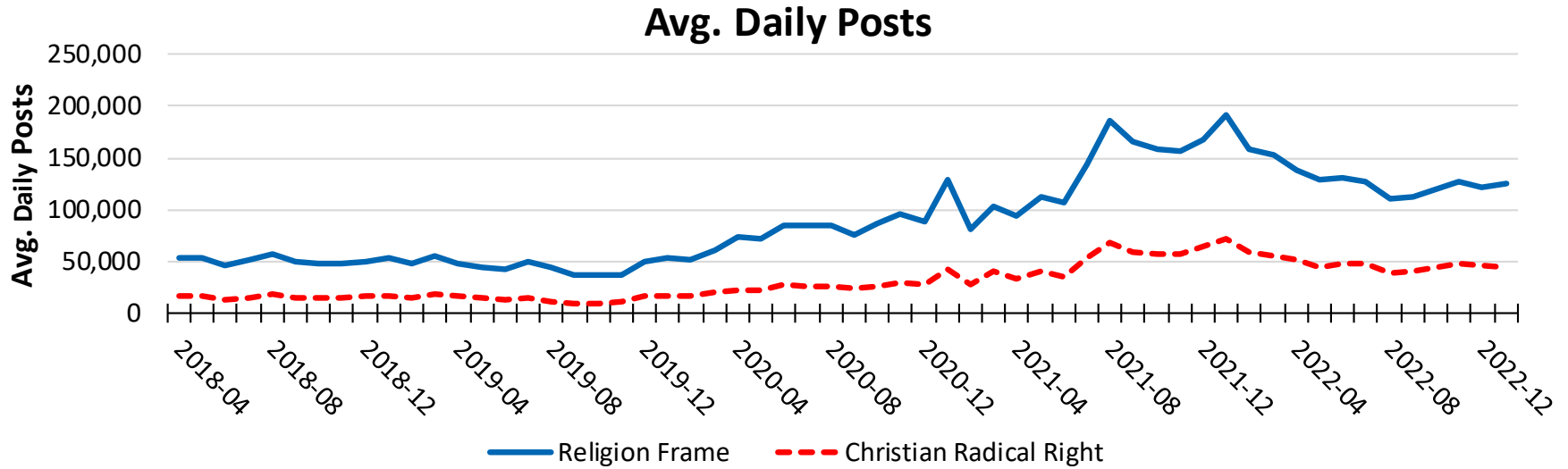
## % Posts with Violent / Aggressive Discourse by Forum for Past Four Months



Note: 429,627 recovered posts.

# Figure 8

## Activity for Religion Composite since April 2018

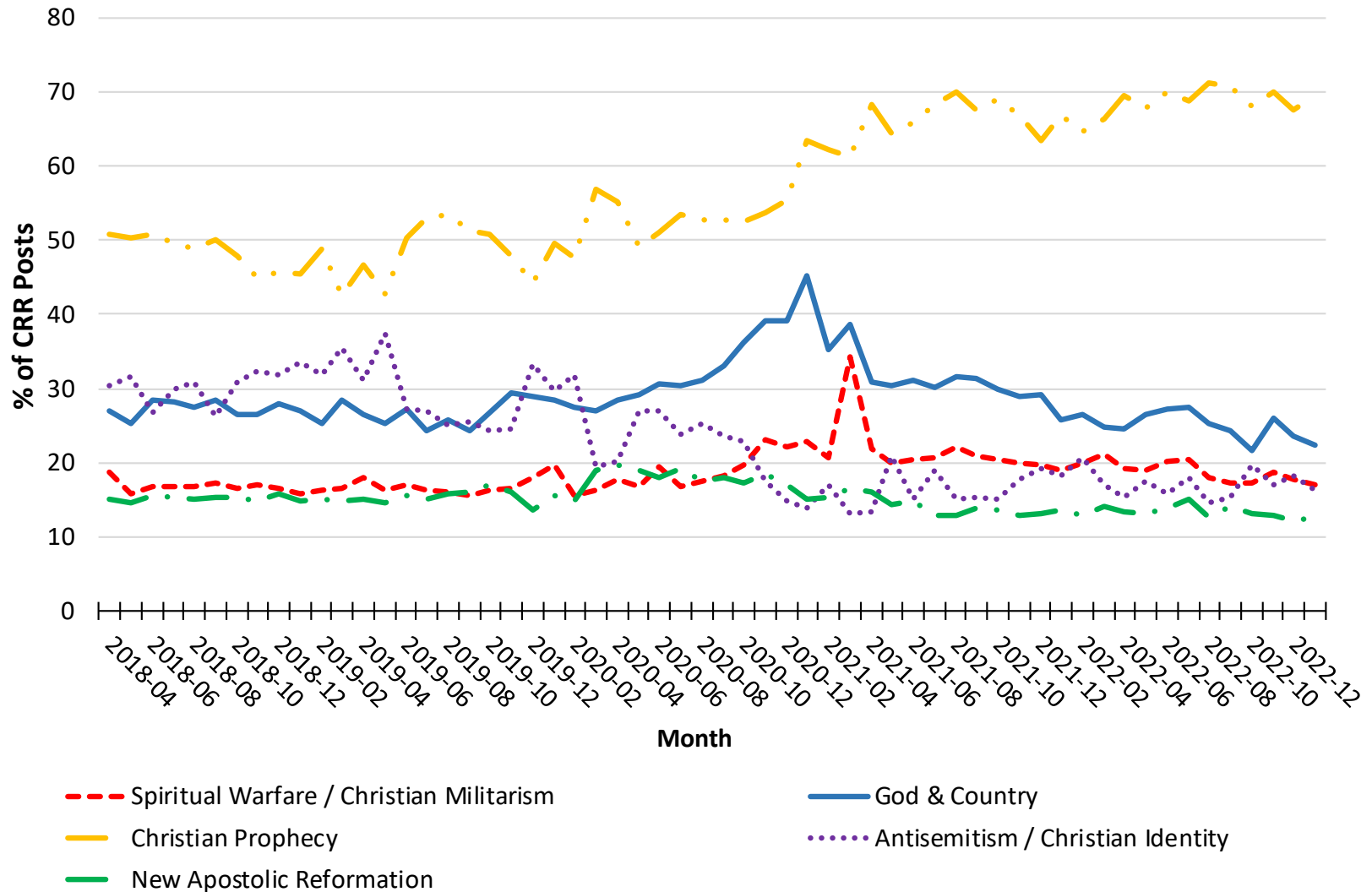


Note: The Religion Composite had 5,272,047 recovered posts. The Religion Composite combines Religion forums and Religion frames.

Prepared by Richard Lee Rogers. © 2022 Youngstown State University.

# Figure 9

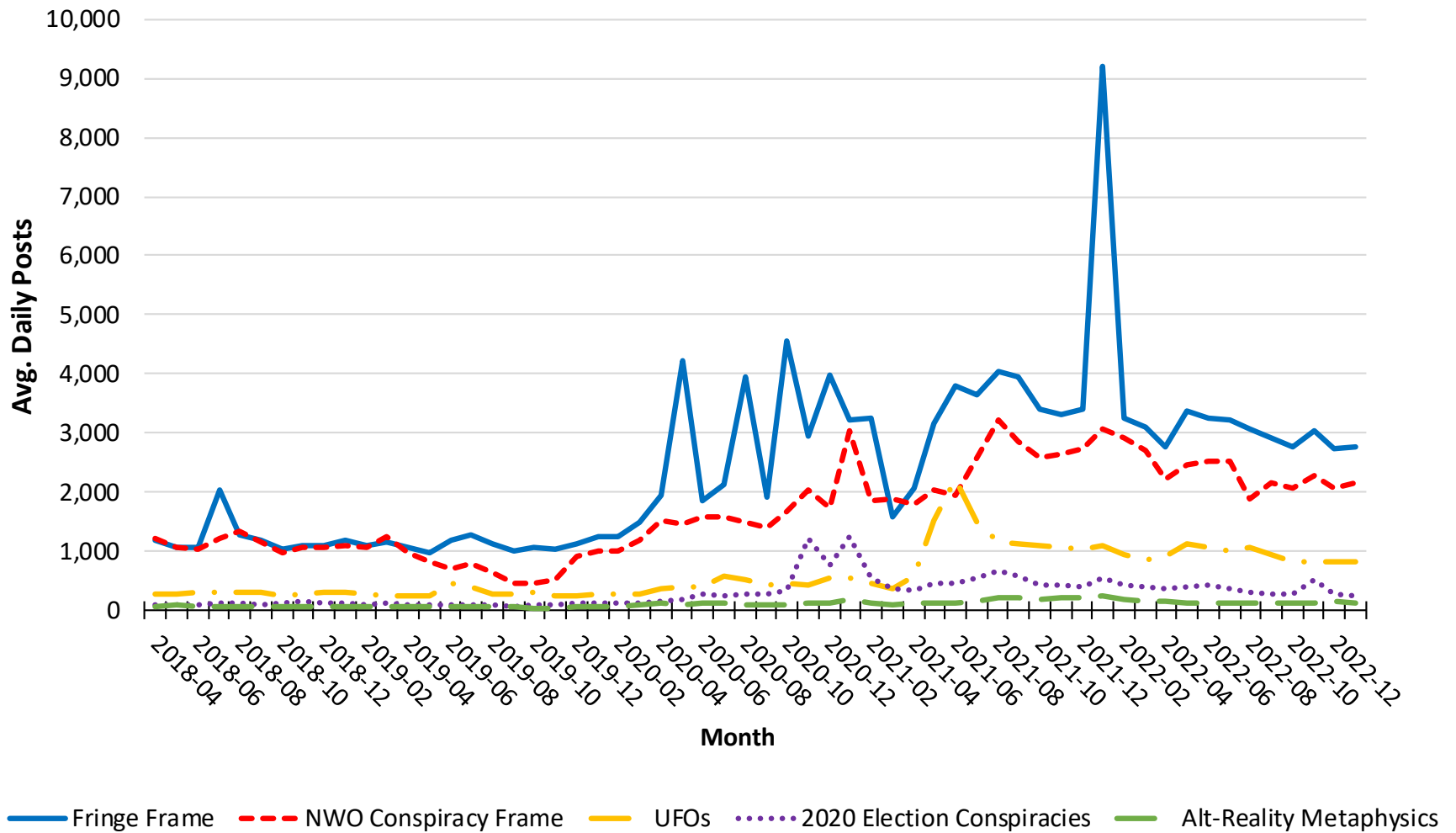
## Components of Christian Radical Right as % of CRR



Note: Christian Radical Right based on 1,814,805 recovered posts. Christian Prophecy includes both interpretations of the Bible text and claims to have messages from God about future events. Christian Reconstructionism is not included on this chart due to its small percentage of posts.

# Figure 10

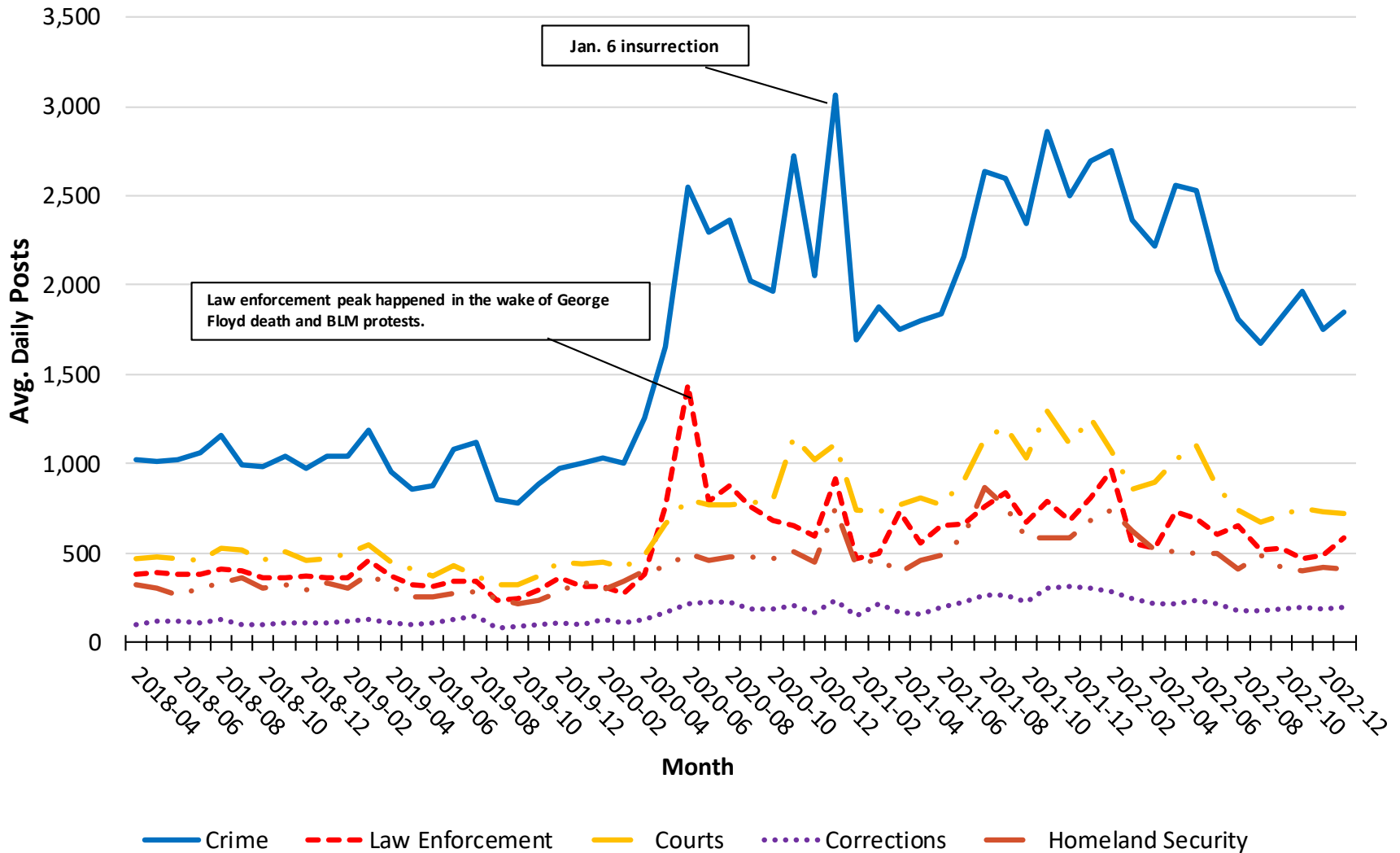
## Alternative Reality Themes since April 2018



Note: Christian Radical Right based on 5,835,131 recovered posts. Christian Prophecy includes both interpretations of the Bible text and claims to have messages from God about future events. Christian Reconstructionism is not included on this chart due to its small percentage of posts.

# Figure 11

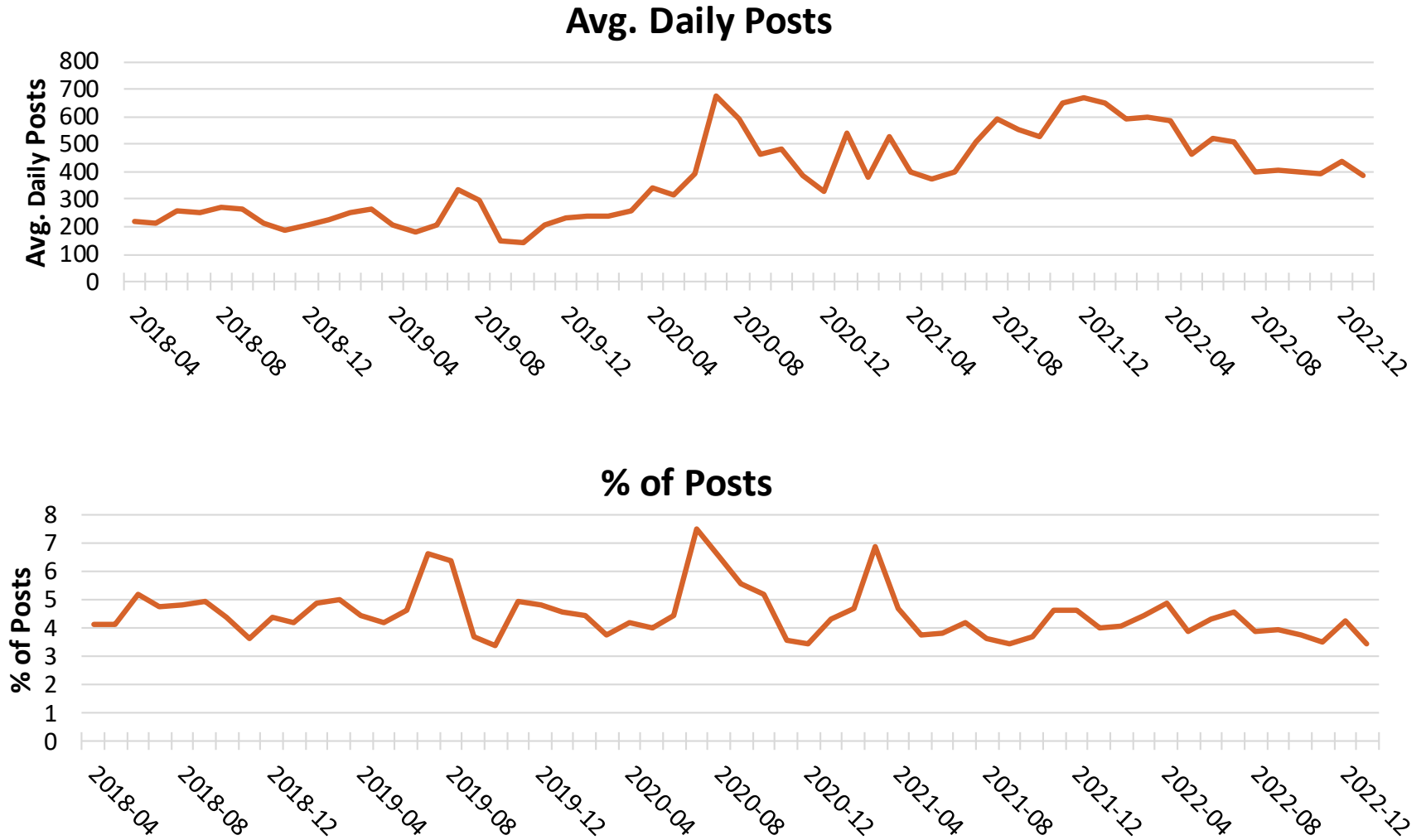
## Avg. Daily Activity for Public Safety Components by Month



Note: The Public Safety frame had 4,523,086 recovered posts.

# Figure 12

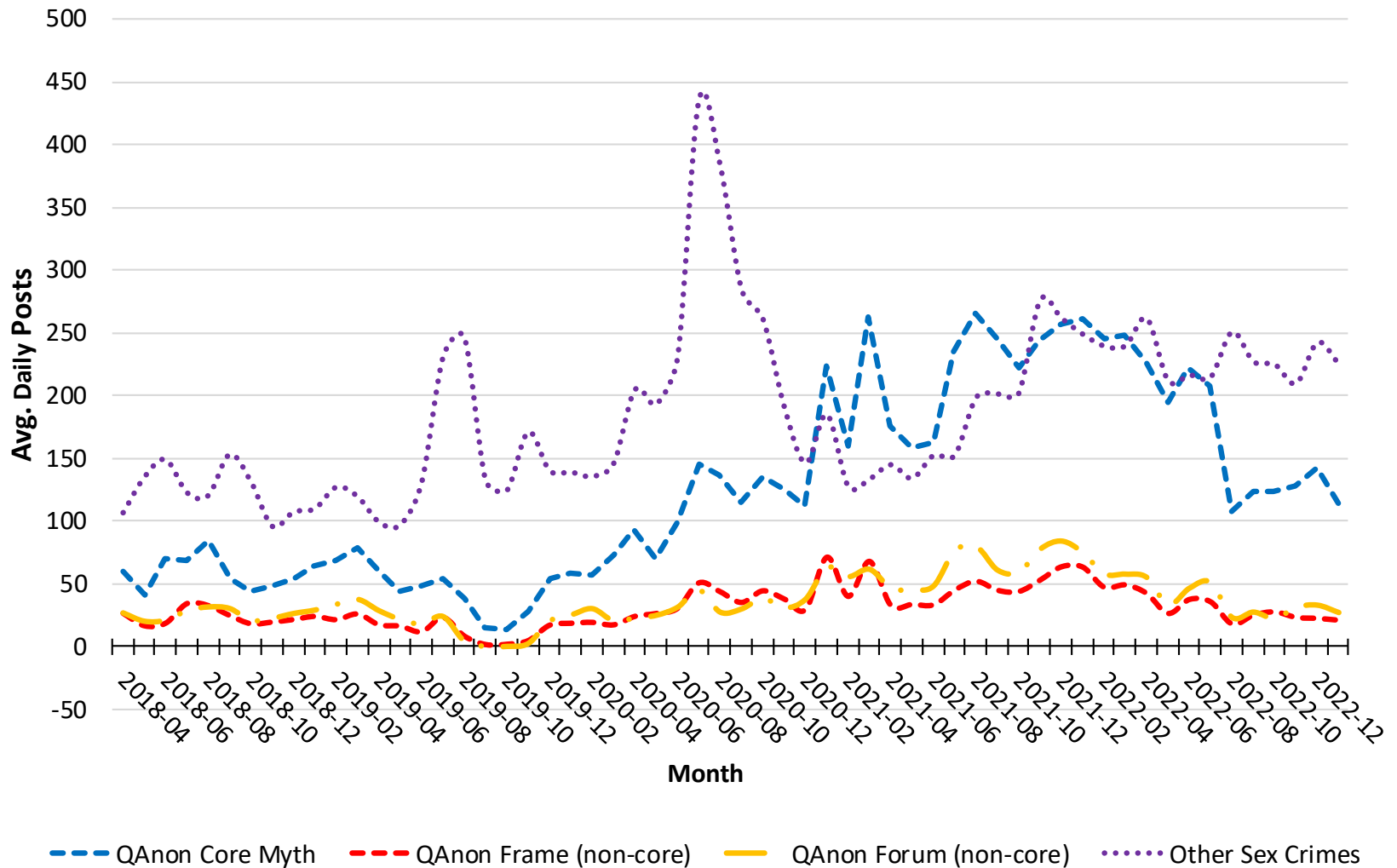
## Sex Crime References since April 2018



Note: Sex-crime-related themes were found in 668,524 recovered posts.

# Figure 13

## Sex Crime References by Source and Month

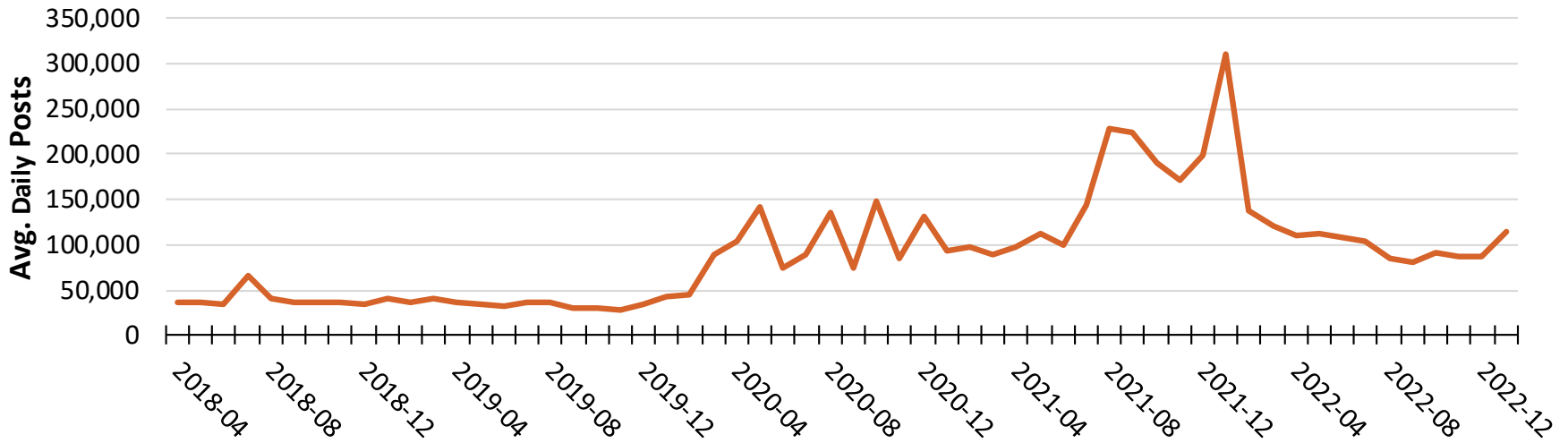


Note: Mutually exclusive categories. QAnon core myth refers to elites (Democrats) engaged in sex trafficking or Satanic sacrifice of kidnapped children. QAnon frame refers to references to sex crimes in QAnon frame that do not qualify as expressions of the QAnon core myth. QAnon forum are references in QAnon forums that cannot be regarded as part of QAnon frame. Outside references refer to discussions of sex crimes outside QAnon universe.

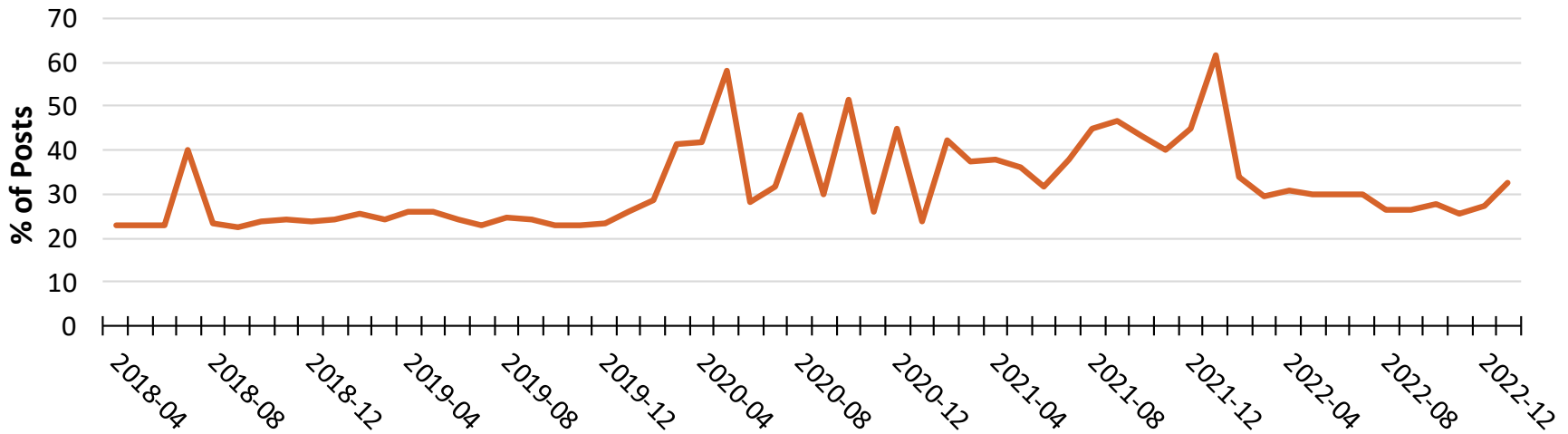
# Figure 14

## Activity for Health Frame since April 2018

### Avg. Daily Posts



### % of Posts

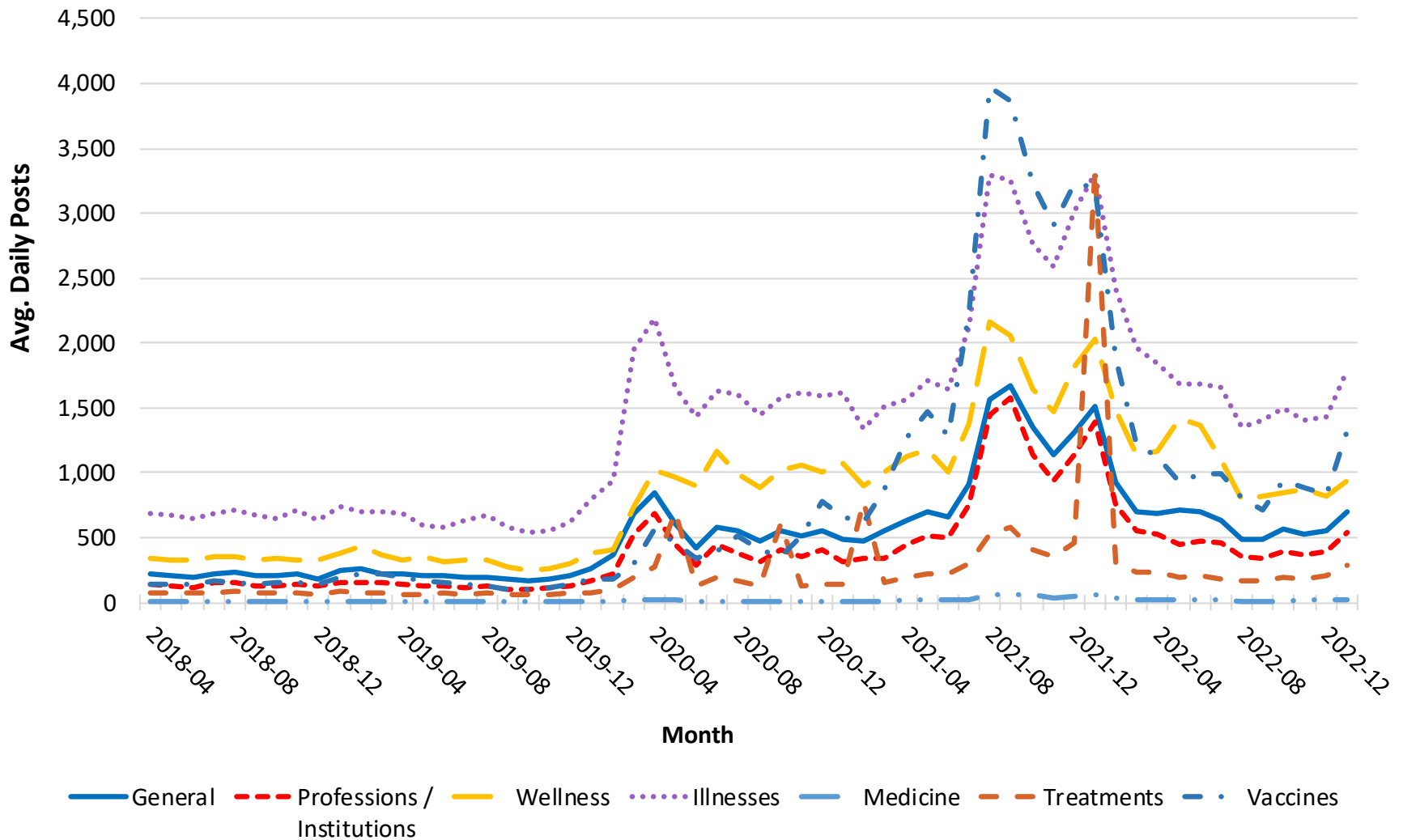


Note: Sex-crime-related themes were found in 5,227,945 recovered posts.



# Figure 15

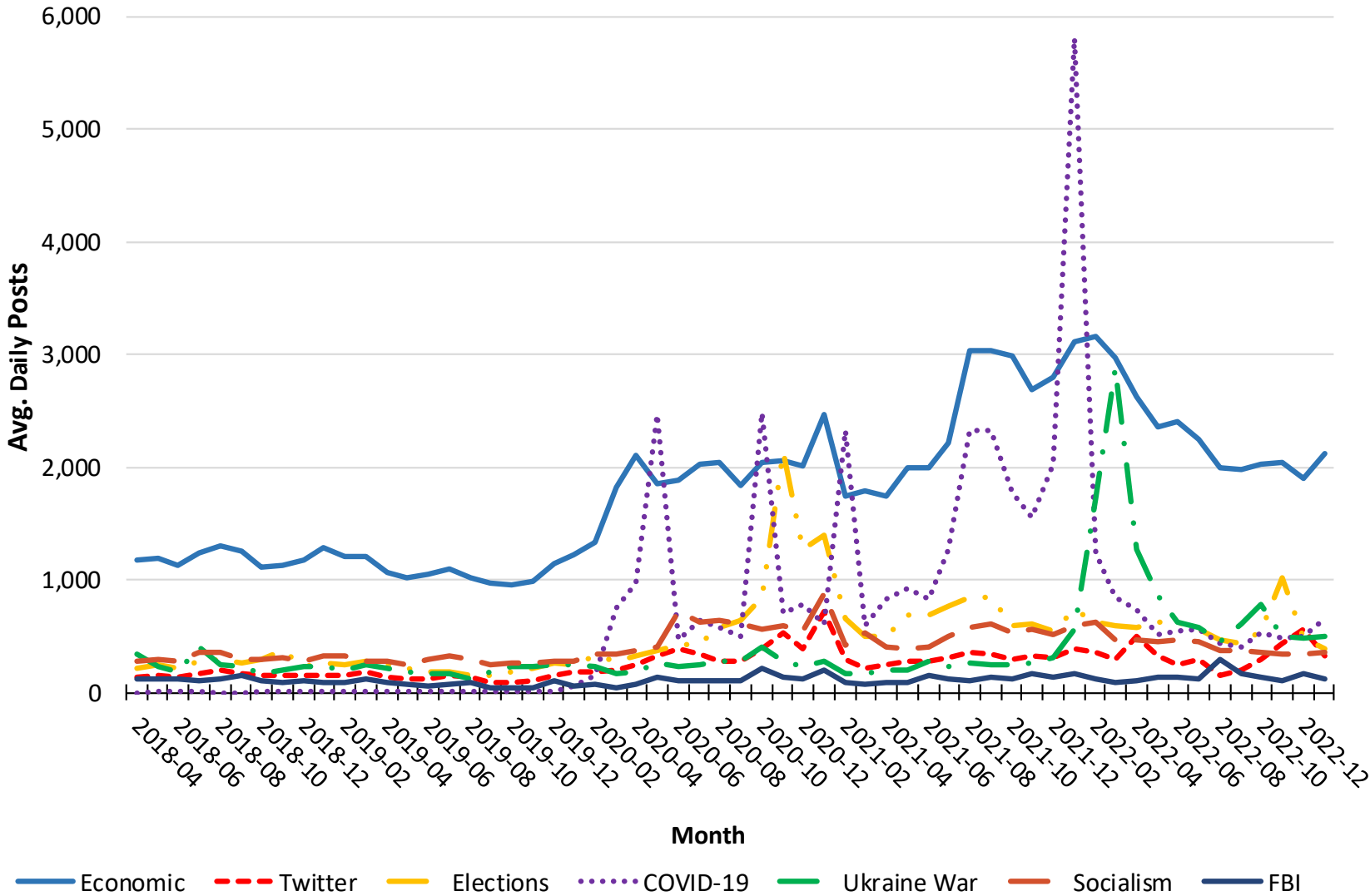
## Health Subframes as a % of Health Frame by Month



Note: The "All Forums" line is the base line for the entire purposive sample. Limited to months where the forum type had average daily activity of at least 100 posts. Incel discourse includes language about dating, appearance, and exercise that would not normally be regarded as toxic but in Incel forums reinforce the idea of involuntary celibacy.

# Figure 16

## Avg. Daily Posts for Contemporary Topics by Month



# Definitions

---

**Forum:** A self-defined forum or channel on a web site or social-media platform

**Frame:** A group of posts identified with a particular theme based on key words, phrases, or stems

**Composite:** The combination of forums and frames related to the same subject matter. Composites were started to highlight the presence of a large amount of material that falls outside related forums. E.g., most religious discourse happens outside Religion forums.

**Activity:** % of posts with at least one key word, phrase, or stem identified with particular themes

## Forum Types

- **Alt-Right:** A coalition of right-wing groups including the Extreme Right and adjacent and/or sympathetic types of forums, i.e., Political Right, News/Politics, and Religion (Main, 2018).
- **Conspiracy/Fringe:** Forums that spread nonmainstream and questionable beliefs, such as conspiracies, beliefs in UFOS and the paranormal, and alternative positions on science and history. These sites are included in the study because of the argument that extremism and conspiracism are linked (Barkun, 2002).
- **Extremism:** Political beliefs and strategies that fall outside the spectrum of normal politics (Anti-Defamation League, 2017).
  - **Extreme Right** includes antisemitic and Christian Identity forums, neo-Nazis, Proud Boys, secessionists, and White pride groups.
  - **Extreme Left** includes anarchist and socialist forums.
- **Incels:** incel is short for involuntarily incelibate.cThese forums are known for their violent discourse.
- **News/Politics:** Sites that spread news or political comment that is extremist or conspiracist in nature. Mainstream media and Fox News channels are not included.
- **Patriot/Military:** Extremist or conspiracist forums that directly appeal to self-described “patriots,” current members of the military, or military veterans. Groups that call themselves “patriot” often have origins in QAnon.
- **Political Right:** Conservative, libertarian, America First, and MAGA forums that go outside of normal political discourse in their spread of extremist and conspiracist beliefs. Mainstream Republican/conservative forums are not included.
- **QAnon:** Movement that asserts elites (most Democrats) are engaged in the sex trafficking and human sacrifice of kidnapped children. It was claimed that Donald Trump had a plan to end these practices.
- **Religion:** Faith-based forums known to promote extremism and conspiracism. Mainstream religion forums are not included.

# Platform Tag Rates since April 2018

Source	Posts	% Total	Tag Rate	% Zero Frames	% One Frame	Avg. Frames
Reddit	7,640,606	49.9	96.7	3.3	12.7	3.5
Telegram	2,534,835	16.6	97.0	3.0	9.7	4.0
8kun	1,692,962	11.1	97.9	2.1	6.9	5.2
Above Top Secret	1,443,114	9.4	93.9	6.1	13.8	3.6
Win Boards	1,119,298	7.3	97.5	2.5	9.7	4.1
Incel.is	404,201	2.6	98.1	1.9	18.4	3.1
Liberty Forums	140,341	0.9	98.7	1.3	3.6	6.2
Stormfront	93,646	0.6	99.3	0.7	3.2	5.4
Rapture Forum	86,743	0.6	97.4	2.6	9.6	4.5
Graham Hancock	74,474	0.5	100.0	0.0	7.7	4.6
Raddle.me	56,091	0.4	89.1	10.9	27.6	2.5
EndChan	5,589	0.0	98.4	1.6	4.5	6.2
HexBear	5,367	0.0	93.8	6.2	14.8	3.6
White Biocentrism	4,065	0.0	98.1	1.9	5.0	6.6
Christogenea	2,198	0.0	98.5	1.5	4.7	4.9
PinkPill.co	667	0.0	96.4	3.6	14.2	3.5
Total	15,304,197	100.0	96.8	3.2	11.5	3.9

# References

---

## General Background

Barkun, M. (2003). *A culture of conspiracy: Apocalyptic visions in contemporary America*. University of California Press.

Merlan, A. (2019). *Republic of lies: American conspiracy theorists and their surprising rise to power*. Metropolitan Books

Uscinski, J. E., & Parent, J. M. (2014). *American conspiracy theories*. Oxford University Press.

## Report Citations

Rogers, R. L. (2021). Spiritual warfare and the Apocalypse: The religious framing of political violence among the American new right. In Crews, G., Markey, M. A., & Kerr, S., Eds., *Mitigating mass violence and managing threats in contemporary society*. IGI Global.

This report identifies patterns and tracks trends related to the framing of social and political extremism in conspiracy and right-leaning extremist discussion forums. The methodology implements automated text analysis based on key words, phrases, and word stems on a purposive from 13 major web-based and social-media platforms.

These numbers are top-line and are released through monthly and quarterly reports to facilitate timely monitoring. Although the trends in activity are interesting in themselves, the reports are not “market share” or “share of voice” reports because of the purposive nature of the sample. It is quite easy to get a different result simply by chance the mix of online forums. For example, if I want the religion frame to be the largest, I add more religion forums.

In spite of this limitation, the following should be noted:

1. Findings from the study are credible because the research includes several large, well-known discussion forums that are regarded as newsworthy.
2. Looking at the trend lines is a logical first step, even in a purposive study, if for no other reason than to see if the time s lines correspond with known trends.
3. While the absolute numbers are easily misinterpreted when discussing overall volume and comparisons across sites, the use of a purposive sample can yield meaningful conclusions about trends within an online community, and comparisons of characteristics of online communities can be reasonably made when the data is standardized, e.g., comparisons are made on percentages and not absolute values.

The intent is not to address all issues in a single document. Rather, activity reporting is the first step in addressing key qualitative questions about how conspiracists and extremist movements coopt existing mainstream beliefs and practices to legitimate their positions and mobilize followers. The key questions include:

1. What frames are used to legitimate extremist views and interpretations of current events?
2. How has the use of frames in support of extremism changed over time?
3. What interactions are forming between frames?
4. To what extent do extremism, conspiracism, and fringe beliefs constitute a unified system of ideology, and to what extent are they decoupled?
5. To what extent are extremism, conspiracism, and fringe beliefs becoming mainstream?

Some specific issues are tracked with an eye on further research:

1. To what extent is religious discourse turning militaristic?
2. To what extent is political discussion turning violent? Most notably I am paying attention to the ongoing promotion of conspiracy theories surrounding the 2020 presidential election.
3. How is the core mythology of QAnon evolving?
4. How is QAnon and other New World Conspiracy theories interacting with religious communities?
5. What is hypermasculinity, and how is it influencing extremist discourse?
6. What conspiracy theories and misinformation are infiltrating the discussion of the COVID-19 pandemic?

The quarterly reports will provide the most detailed top-line analysis, supplemented by monthly updates through flash reports. In addition, separate reports regarding the tracking of trends related to left-wing extremism, public-health (mis)information, and religion forums are in development. Detailed analysis of trends will be handled through peer-reviewed publications.

Coding has been made public and a link to a publicly shared Google drive can be online at <https://www.rogersperspectives.com/tracking-of-extremism-report>